

Gaining Access To Dragon NaturallySpeaking

Gaining access to Dragon NaturallySpeaking will vary, depending on whether or not you have created a user speech profile. If you have not created a user speech profile, use the instructions immediately below; if you have created a user speech profile, jump to the section beginning on the next page.

If you have not created a user speech profile

At the bottom left of the screen,

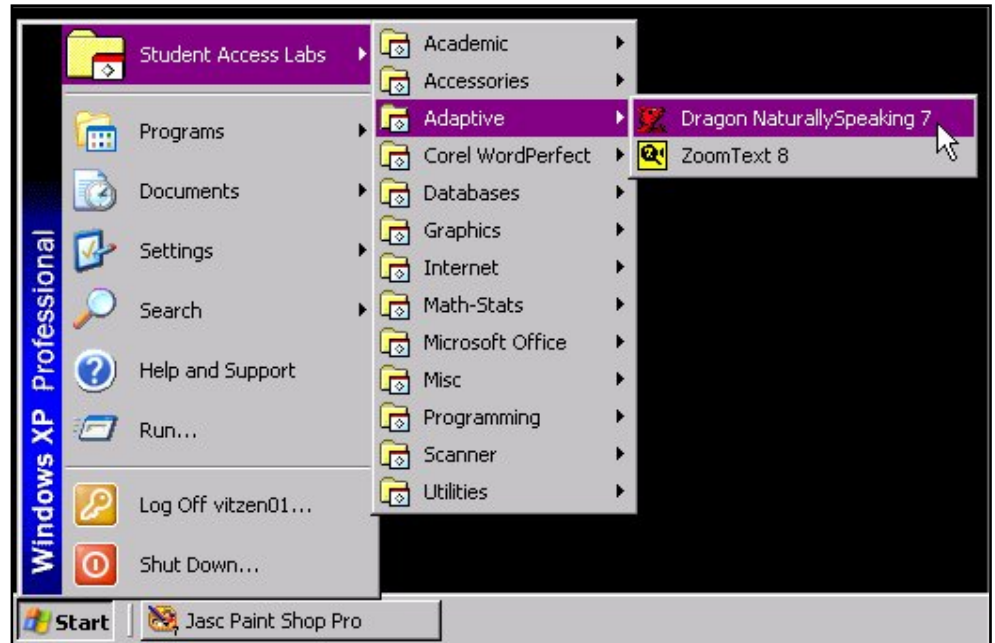
CLICK the *Start* button

POINT to *Student Access Labs*

POINT to *Adaptive*

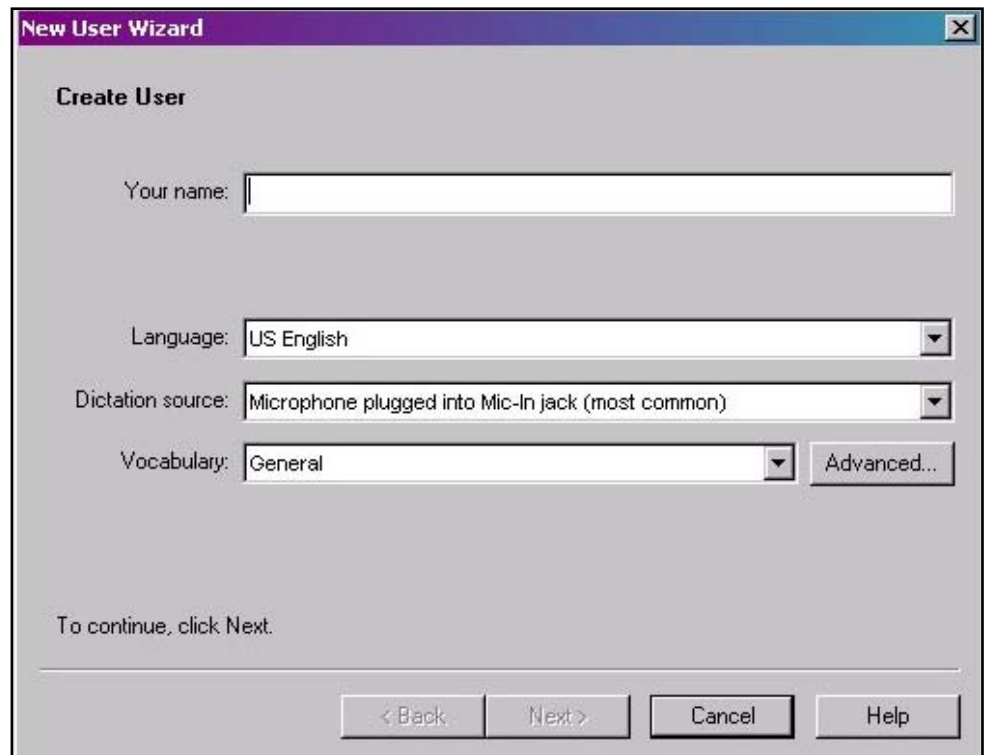
CLICK *Dragon NaturallySpeaking*

NOTE: The application may take a couple minutes to install.



At this point, the New User Wizard will appear to guide you step-by-step through the process of gaining access to Dragon NaturallySpeaking.

Read and follow the instructions carefully. After you complete all of the steps, Dragon NaturallySpeaking will launch and be ready to use.



If you have created a user speech profile

At the bottom left of the screen,

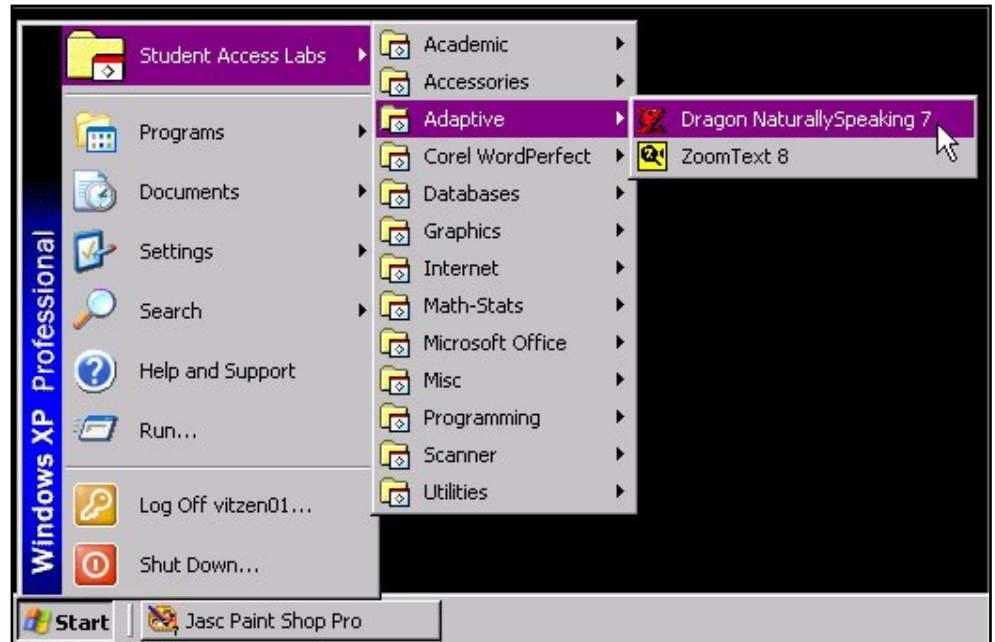
CLICK the *Start* button

POINT to *Student Access Labs*

POINT to *Adaptive*

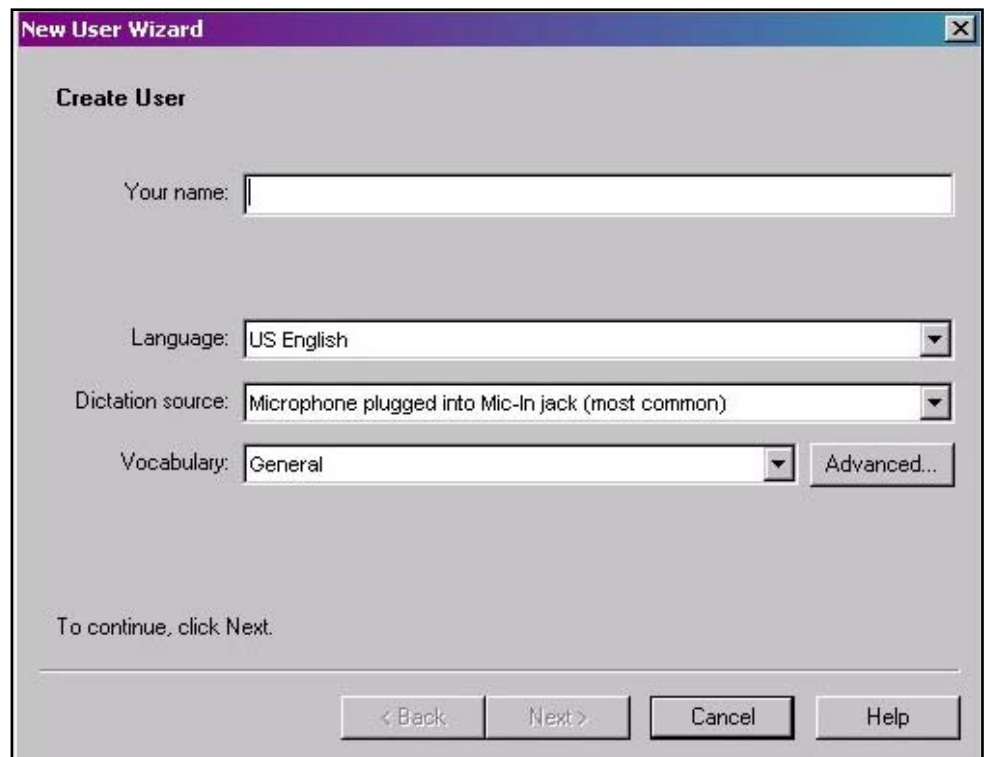
CLICK *Dragon NaturallySpeaking*

NOTE: The application may take a couple minutes to install.



At the New User Wizard dialog box,

CLICK the *Cancel* button

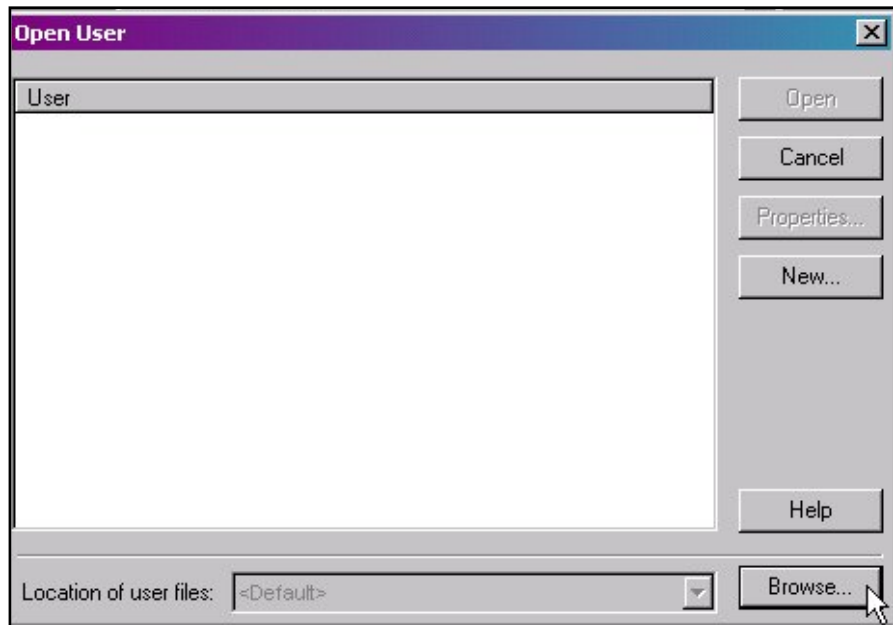


CLICK *NaturallySpeaking* on the menu bar.

CLICK *Open User*



CLICK the *Browse* button



SELECT the appropriate drive where your file is located

SELECT the file

CLICK *OK*

You will see your file in the Open User dialog box.

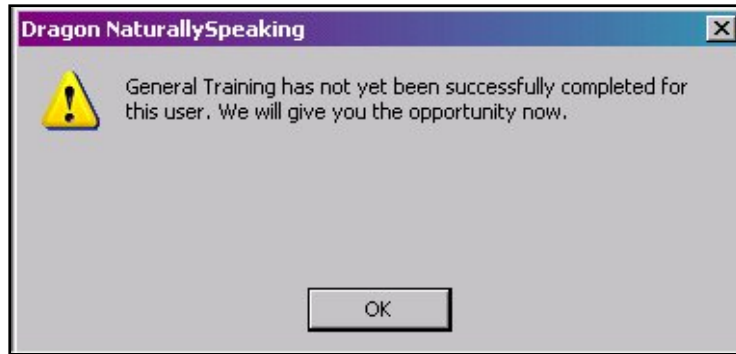
SELECT the user file.

CLICK *Open*



Depending on whether or not you completed the New User Wizard as you created your profile, the Dragon NaturallySpeaking dialog box (see right) may appear.

If it does, click OK. Then either follow the New User Wizard's instructions or click the *Next*, *Finish*, or *Close* buttons to bypass this opportunity.



Dragon NaturallySpeaking will be ready for use, to open the DragonPad:

SELECT *Tools*

SELECT *DragonPad*

