



This document is intended to help students without adaptive software experience get started in the IPFW Student-Access Labs.

Note: If you are computing in a lab, you must save your files to a disk (3.5" or Zip) if you want to keep them.

LABS

Kettler Hall: PCs
204A, 217, 217D

Neff Hall: PCs
B71 & B73

Helmke Library: PCs
1st floor, snack lounge

Science Building: PCs
G15

Walb Union: PCs & Macs
221

Services for Students with Disabilities (open to students registered with SSD): PCs
Walb Union 118

Hours:
Hours may vary by semester and are posted in the labs.

The Basics: What is this software?

There are two kinds of adaptive software available in the labs: *ZoomText* and *Dragon Naturally Speaking*. A short description of each is included later, as well as instructions on how to access them from the Student-Access or SSD Labs. You must bring your own headsets to use sound capable or voice-activated software in the labs at IPFW.

How do I get help?

There are several sources for learning this software.

Software Manuals: available at every SSD workstation and in the SSD Lab. Additionally, there will be manuals available on reserve in the library for you to take home.

Help files within the programs: a great and convenient source of assistance as you're working with and learning a program.

Services for Students with Disabilities workshops: given at announced times and dates, usually near the beginning of semesters.

Other students: get to know others who use the same programs.

Student computing consultants: consultants in labs will be able to help you with general computing questions, but may not have in-depth knowledge of a particular software application.

Quick reference cards: available at every workstation, listing the most commonly used commands.

When should I start using it?

Like any software, it will take a while to get comfortable with these applications. Also, with *Dragon Naturally Speaking*, you must train the software to recognize your speech patterns, and so working with the program well ahead of any due dates will minimize stress. It's best to get familiar with it before the semester begins.

What is ZoomText?

ZoomText is a "fully integrated magnification and screen reading program." It provides 2-16 times magnification and can read the screen's contents to you.

Starting ZoomText

To start *ZoomText*, you must be at a computer configured to be ADA (Americans with Disabilities Act) compliant. These machines can be found in a Student-Access Lab or in the SSD's Computing Lab. Other stations in the labs will not have this software available.

The *ZoomText* icon should be located on the desktop. Double-click the icon to open the application (example shown to the right).

ZoomText will immediately open with a 2X magnification level in place. At this point, you can adjust your preferences in *ZoomText* from the program's menus and launch any other programs you need for your computing tasks.





Adaptive Software for Students
Adobe Acrobat Reader
Chat at IPFW
Ceilidh Forums
Corel WordPerfect
Homesite

iLogin
Introduction to IPFW Computer Labs
Macintosh at IPFW
NETg
IPFW Student e-mail
Netscape Navigator

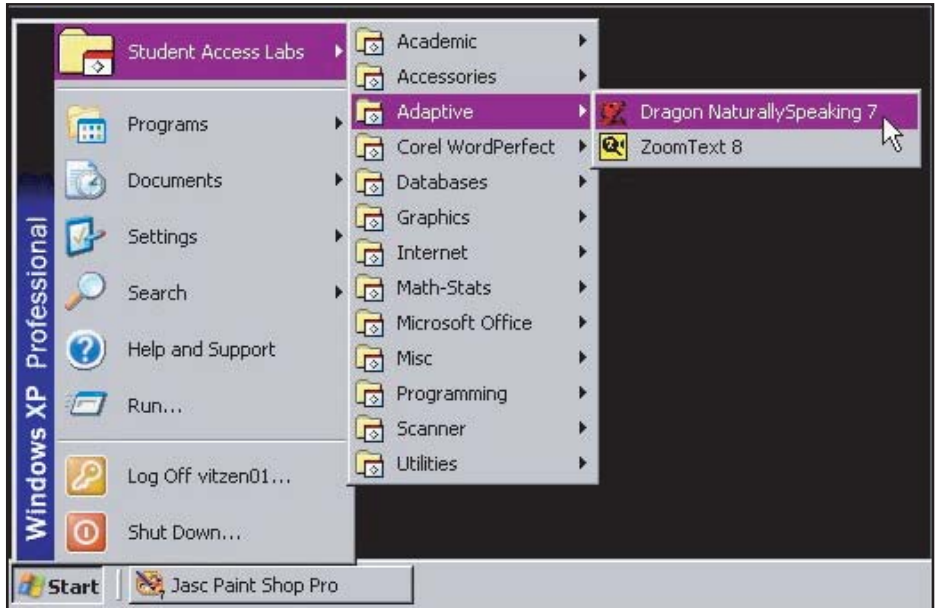
Netscape Page Composer
PowerPoint
Remote Connections for IPFW Students
Student Web Space
WebCT Vista
Word

What is NaturallySpeaking?

NaturallySpeaking is a large-vocabulary continuous speech recognition program. It allows you to dictate instead of type to enter and revise text in a word-processing program or almost any other Windows application.

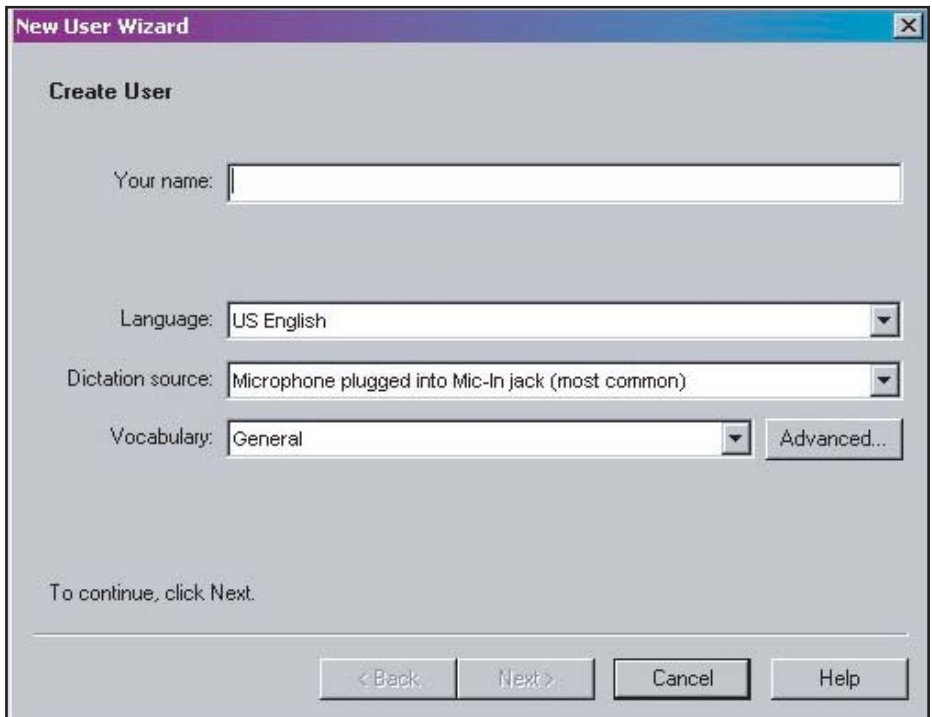
Starting NaturallySpeaking

You must be at an ADA compliant computer or in the SSD Lab. With this software you must also have a Zip disk or USB storage device, as your user voice file will not fit on a 3.5" disk. Plug the headphones and microphone into the labeled jacks on the left side of the workstation. If you haven't used *NaturallySpeaking*, you will need to spend a few minutes training the program to recognize your voice and speech patterns, and then save that user voice file to your Zip disk or other storage media.



At this point, the New User Wizard will appear to guide you step-by-step through the process of gaining access to *Dragon NaturallySpeaking*.

Read and follow the instructions carefully. After you complete all of the steps, *Dragon NaturallySpeaking* will launch and be ready to use.



Rev. 2 05/04